

# THE CRESCENT ADVANTAGE.

## ONE GREENWAY PLAZA PREMIER OFFICE SPACE WITH A TELECOMMUNICATIONS ADVANTAGE

### TELECOMMUNICATIONS AMENITIES

#### In-building:

- Voice And High-speed Data
- High Speed Internet
- Captivate Network
- Plug & Play Distribution System
- Fiber From Multiple Providers
- Complete Telecom Diversity
- Fiber Based Services
- Shared Tenant Services
- Choice Of Nine Providers
- Multiple Points Of Entry
- Dual Riser Closets On Each Floor
- Riser Closets Stacked Vertically

- Controlled & Secured Space
- Plenty Of Vertical Riser Space

#### Rooftop:

- 360 Degree Coverage Area
- Plenty Of Rooftop Space
- Antenna & Satellite Dish Space
- Easy Access To Roof & Riser Space

#### Power Services:

- Ample Electrical Supply
- Emergency Generator Space

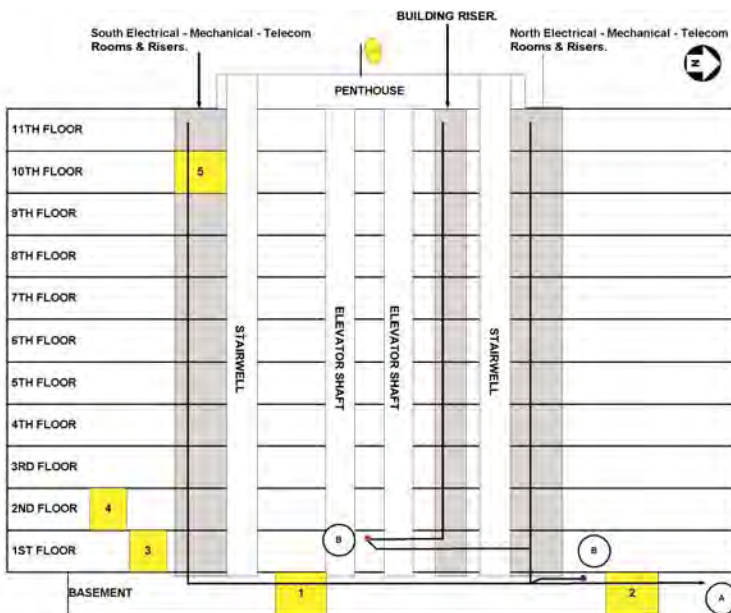
### TELECOM PROVIDERS:

AboveNet	877-462-2683
AT&T	800-750-2355
Cogent	877-875-4432
Cypress	713-403-4400
Reliance Globalcom	415-901-2000
tw telecom	713-341-4000
XO (Nextlink)	866-349-0134

### CABLE TELEVISION PROVIDER:

Comcast	800-266-2278
Phonoscope	713-272-4600

*This Does Not Represent An Endorsement Of These Companies Or Their Products By Crescent And May Change Without Notice.*



### TELECOM EQUIPMENT SPACE

1. Reliance Globalcom
2. AT&T
4. Crescent

### TELECOM ENTRANCE CONDUITS

- (A) North Entrance Conduits to Richmond Avenue.
- (B) West Entrance Conduits to One Greenway Plaza Parking Garage.



For more information contact  
Crescent's Telecom Services Group  
800-236-7099